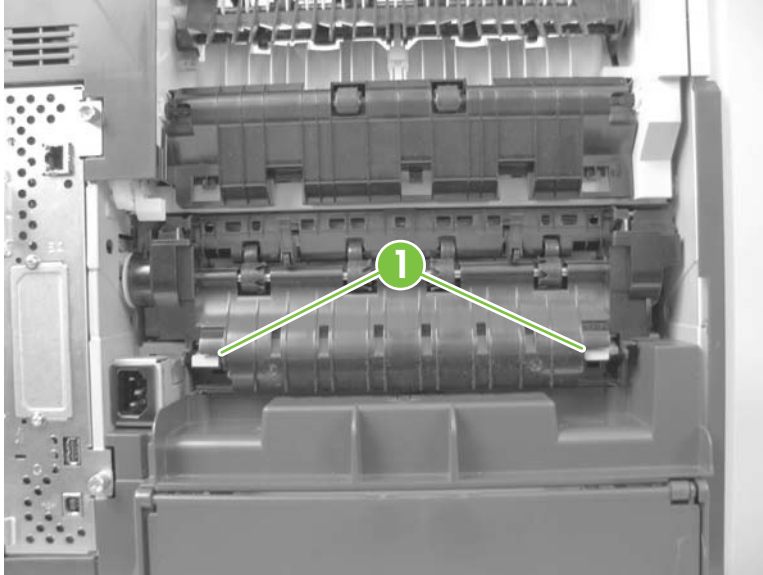


Fuser

△ **WARNING!** The fuser might be very hot. After turning off the product power, allow the fuser to cool for at least 5 minutes before removing it.

1. Remove the rear output bin. See [Rear output bin on page 148](#).
2. Squeeze the blue fuser-release tabs (callout 1).

Figure 6-23 Remove the fuser (1 of 2)



3. Pull the fuser straight back and out of the product.

△ **CAUTION:** Do not drop or jar the fuser. It can easily be damaged if it is mishandled.

💡 **TIP:** When you replace the fuser, make sure that it is fully seated into the product. You should hear both sides snap into place.

Figure 6-24 Remove the fuser (2 of 2)



Transfer roller

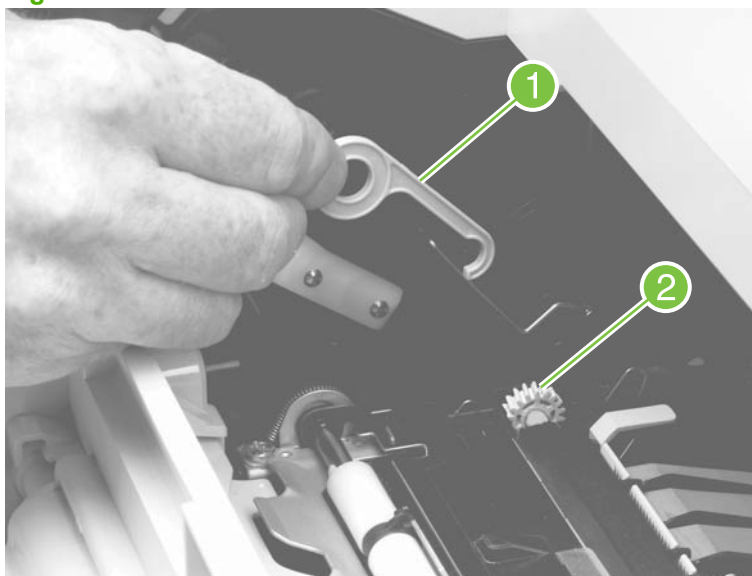
△ **CAUTION:** Do not touch the black rubber on the roller. Skin oils on the roller can cause print-quality problems. The use of disposable gloves is recommended when you remove the transfer roller.

1. Open the front cover.
2. Use a transfer-roller removal hook (callout 1) to lift the left end of the metal shaft out of place near the blue gear (callout 2). If a removal hook is not available use a flatblade screwdriver. Slide the transfer roller to the left to remove it.

△ **CAUTION:** Be careful to release and lift the left side of the roller *first*, and then slide the roller out.

📄 **NOTE:** The transfer-roller removal hook is included with a transfer-roller replacement kit.

Figure 6-13 Remove the transfer roller



💡 **Reinstallation tip** When you install the transfer roller, make sure that the black collar on the left side is oriented correctly, with the open end face-down (the solid end is face-up).

Tray 2 separation, pickup, and feed rollers

△ **CAUTION:** When handling the rollers, avoid touching the roller surfaces. Skin oils and fingerprints on a roller surface can cause print-quality problems.

1. Remove Tray 2 and place it on a level work surface. Locate and open the spring-loaded cover that is next to the roller in Tray 2.

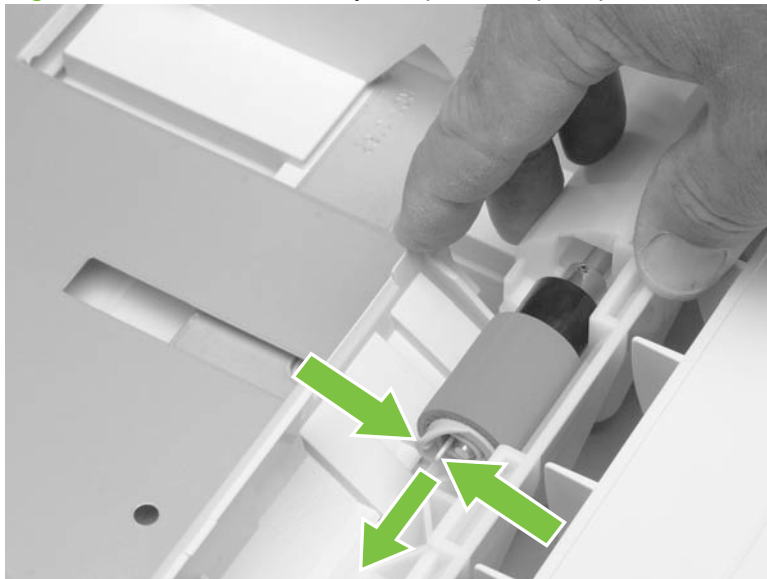
△ **CAUTION:** When you install this roller, make sure that it locks into place. Verify that the roller is correctly oriented, and that the torque limiter next to the roller is correctly positioned against the locking pin on the shaft.

Figure 6-9 Remove the Tray 2 separation, pickup, and feed rollers (1 of 4)



2. Pinch the blue latch that is on the left side of the roller. Slide the roller off of the shaft.

Figure 6-10 Remove the Tray 2 separation, pickup, and feed rollers (2 of 4)



3. Move the front of the product to the edge of the work surface for better access to the remaining pickup and feed rollers. To find the rollers, look up into the inside of the opening that was created when you removed Tray 2.

⚠ **WARNING!** Do not allow the front of the product to extend beyond the edge of the work surface. The product can become unbalanced and fall, which can cause damage to the product or personal injury to the service technician.

Figure 6-11 Remove the Tray 2 separation, pickup, and feed rollers (3 of 4)



4. Pinch the locking lever on the left side of the feed roller (the front top roller below). Slide the roller off of the shaft. Repeat this step for the pickup roller (the bottom roller below).

💡 **Reinstallation tip** You might have to rotate the roller to gain access to the locking lever.

📝 **NOTE:** When you install these rollers, make sure that the rollers lock into place on the tabs that are on the drive gears.

Figure 6-12 Remove the Tray 2 separation, pickup, and feed rollers (4 of 4)

