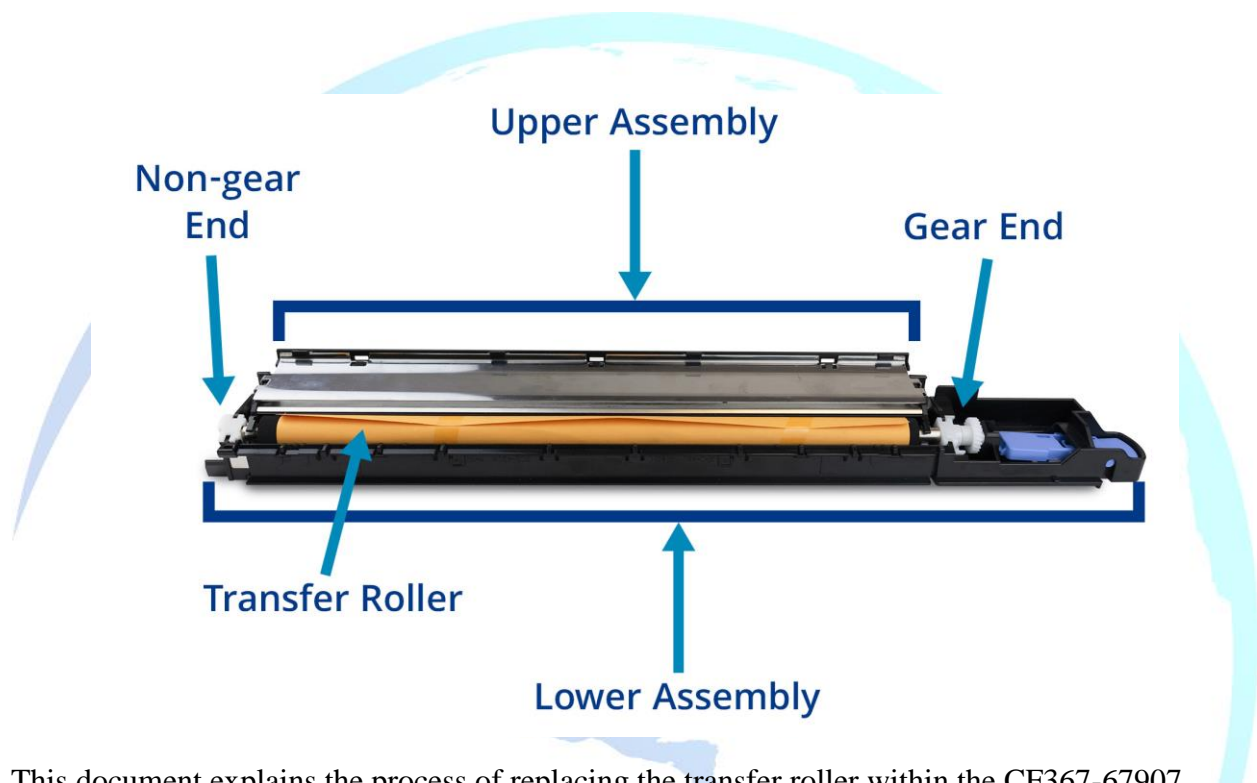


**Replacing CF367-67907-3 Transfer Roller  
HP M806 and M830MFP**



This document explains the process of replacing the transfer roller within the CF367-67907 transfer roller assembly for the HP LaserJet Enterprise M806 and HP LaserJet Enterprise Flow MFP M830. Refer to the above diagram for terminology used in the document.

**Materials/Tools**

- Small flat-blade screwdriver
- A CF367-67907 transfer roller assembly removed from printer
- A new CF367-67907-3 Transfer Roller

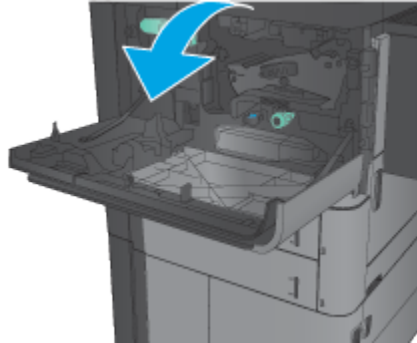
## Section one - Removing CF367-67907 from the printer:

Follow the steps below to remove the assembly from the printer.

Source: <https://support.hp.com/my-en/document/c04193506>

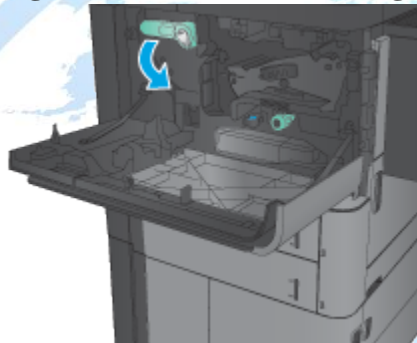
1. Open the front door.

**Figure 1: Open the front cover**



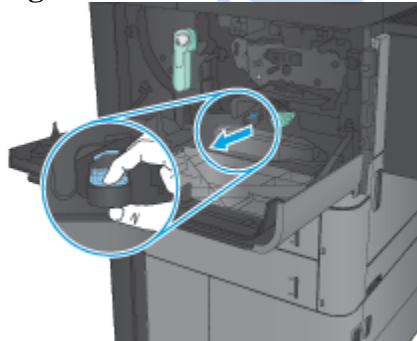
2. Rotate the cartridge-release lever down until it clicks into place.

**Figure 2: Release the cartridge-release lever**



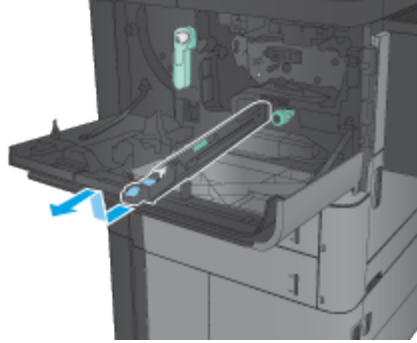
3. Press the blue tab, and then slowly pull the transfer roller assembly toward the front of the product until it stops.

**Figure 3: Press the blue tab**



4. Lift the assembly up to release the catch on the underside, and then remove the assembly.

**Figure 4: Remove the transfer roller**



## Section two - Replacing the transfer roller:

### Step one:

1. Locate two tabs identified on the image below:



2. Carefully pry and release the two tabs by using a small flat-blade screwdriver.

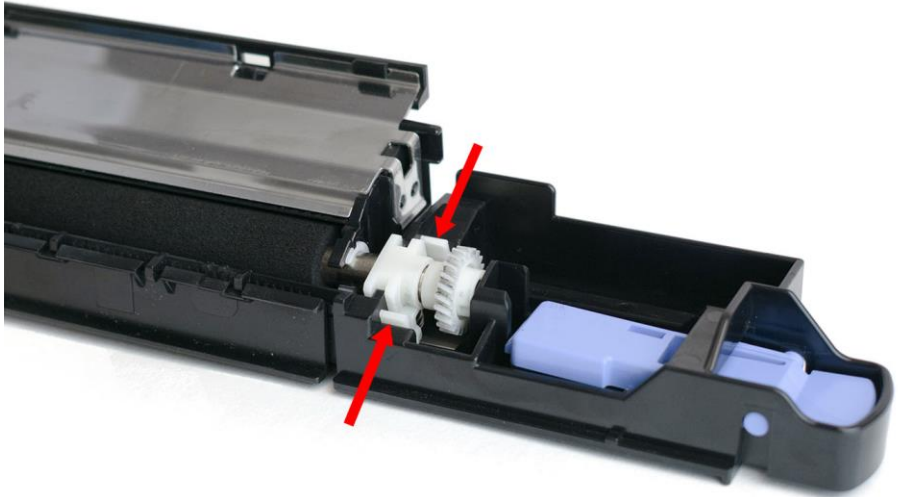


3. Once both tabs are released, the assembly should appear like image below:



### Step two:

1. Locate the *gear end* of the transfer roller (See diagram at beginning for assistance).
2. Press the two tabs located on the bushing to release the *gear end* of the transfer roller.



**Step three:**

1. Lift up, raising the *gear end* of the transfer roller.
2. Once raised, move the *upper assembly* of the transfer roller assembly to the right (as shown below) and detach from the *lower assembly*.
  - a. **NOTE: The spring under the bushing is not captive and may fall off during disassembly**



**Step four:**

1. Remove gear, bushing, and spring from the *gear end* of the transfer roller.
  - a. **NOTE: The spring will be reused during assembly.**



**Step five:**

1. Locate the *non-gear end* of the transfer roller (See diagram at beginning for assistance).
2. Hold the *upper assembly* and gently pull the transfer roller down until the shoulder clears the white retainer bushing. Remove old transfer roller.



**Step six:**

1. Locate the new transfer roller, leaving the protective paper intact.
2. Remove the gear and bushing from the new transfer roller and set these aside.



**Step seven:**

1. Insert the *gear end* of the new transfer roller first, into the *upper assembly* of the transfer roller assembly.
2. Gently pull down the roller until the shoulder clears the white retainer bushing.



**Step eight:**

1. Install the bushing, gear, and spring onto the gear end of the roller, as shown below:



**Step nine:**

1. Insert/install the *non-gear end* into the *lower assembly* of the transfer roller assembly.
2. Press down on the *gear end* until the bushing locks into place.



**Step ten:**

1. Press down gently until the 2 tabs lock back into place.



**Step eleven:**

1. Remove the orange paper protecting the roller and install the transfer assembly into the printer.



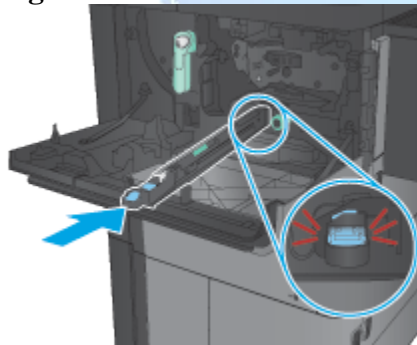
**Section three - Installing CF367-67907 into the printer:**

Follow the steps below to reinstall the assembly back into the printer.

Source: <https://support.hp.com/my-en/document/c04193506>

1. Slide the replacement transfer roller into the product until it snaps into place.

**Figure 1: Install the transfer roller**



2. Grasp the cartridge-release button, press the gray button on the lever, and then rotate the lever clockwise until it is parallel to the ground and clicks into place.

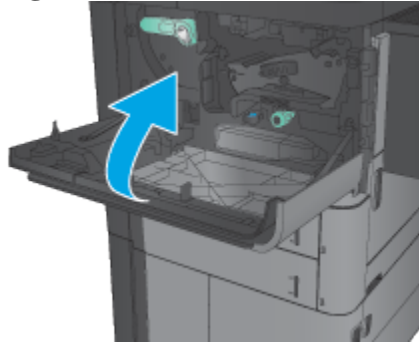
**NOTE: The handle will not rotate unless the button is pressed in.**

**Figure 2: Close the cartridge-release lever**



3. Close the front door. The front door will not close if the cartridge-release lever is in the unlocked position.

**Figure 3: Close the front door**



4. Do the following:
  - a. Plug in the power cord.
  - b. Turn on the product

